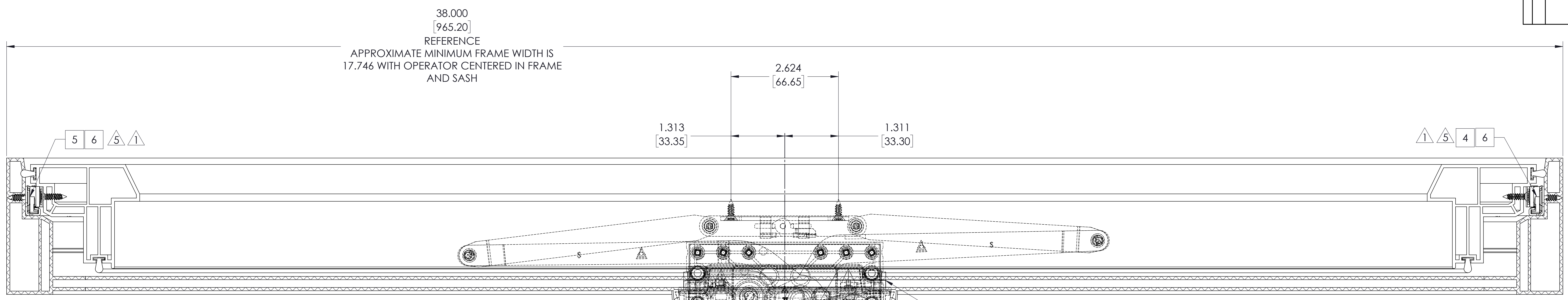
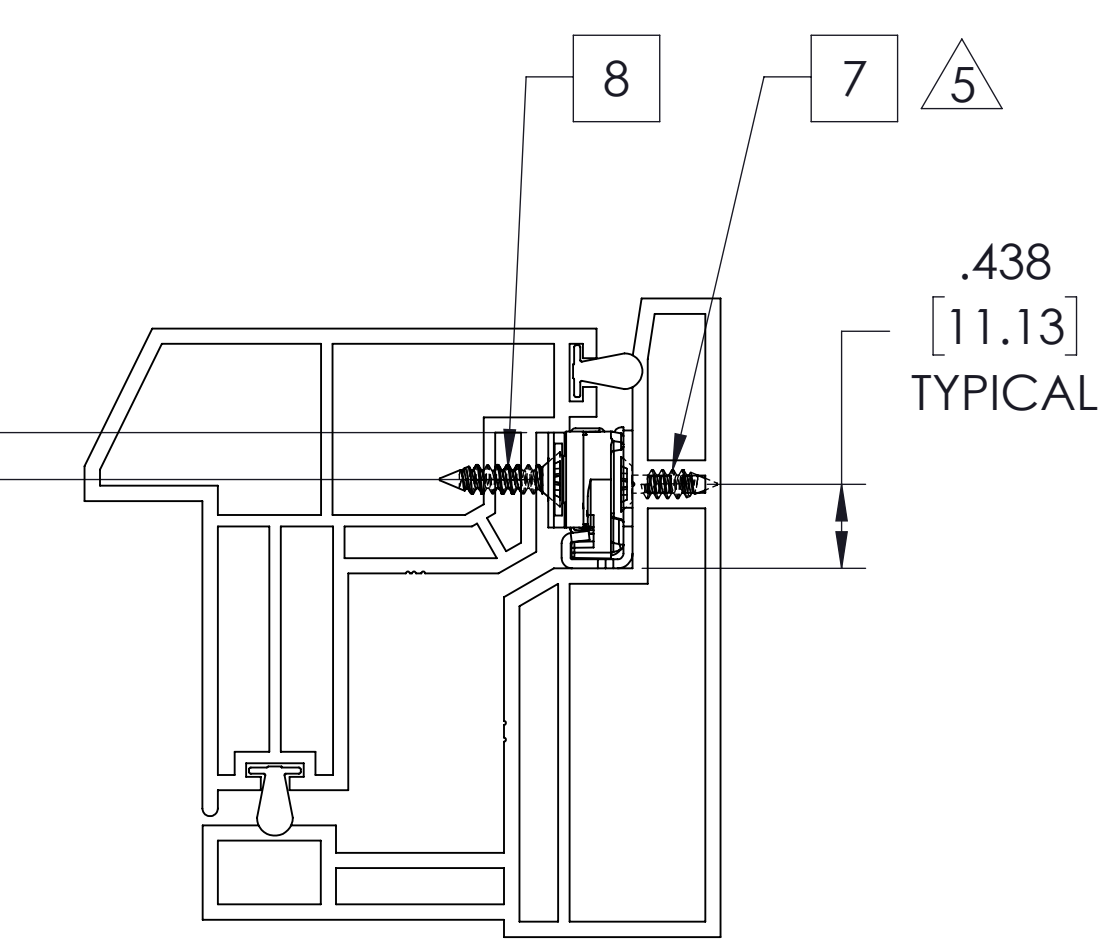
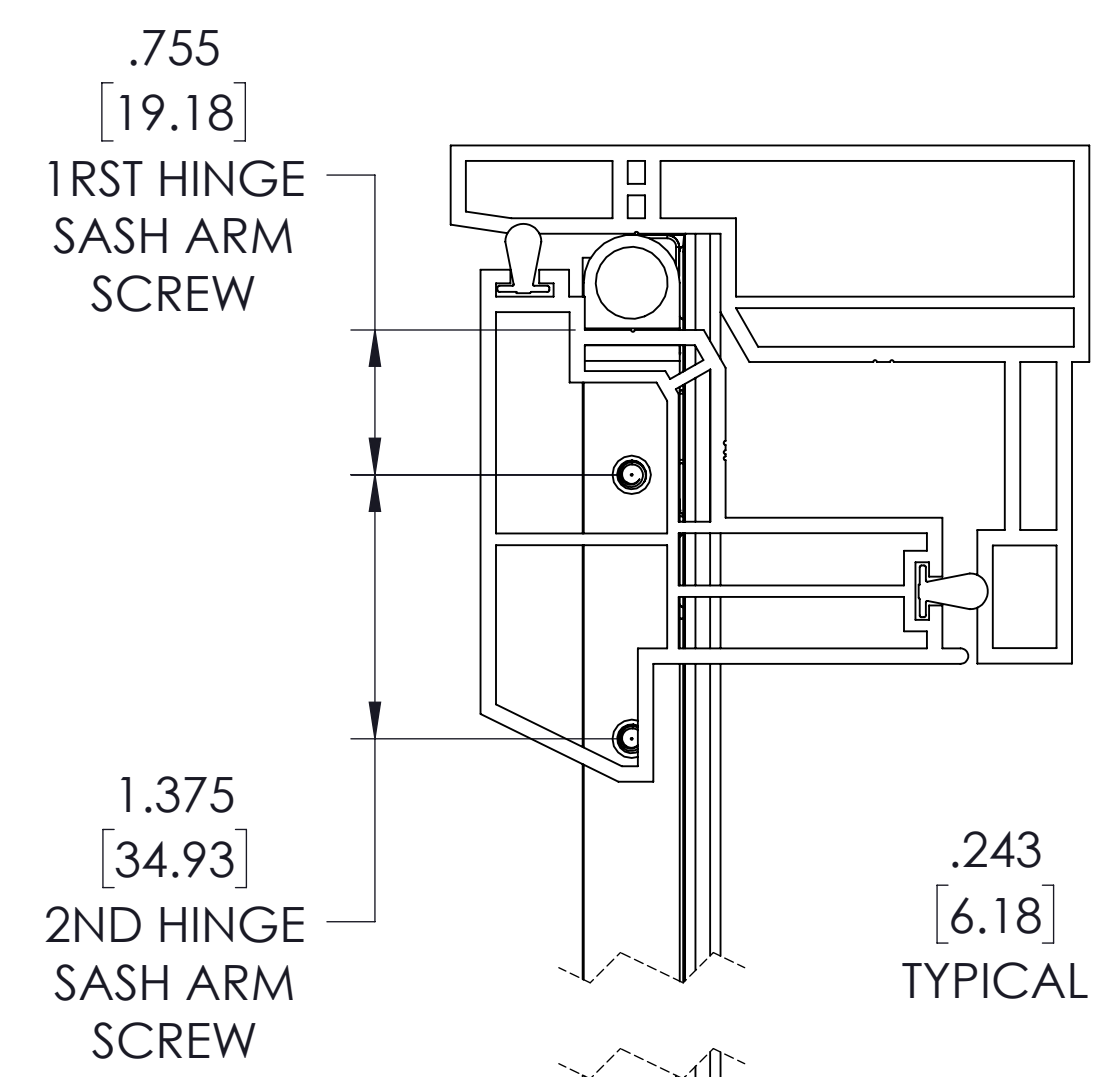
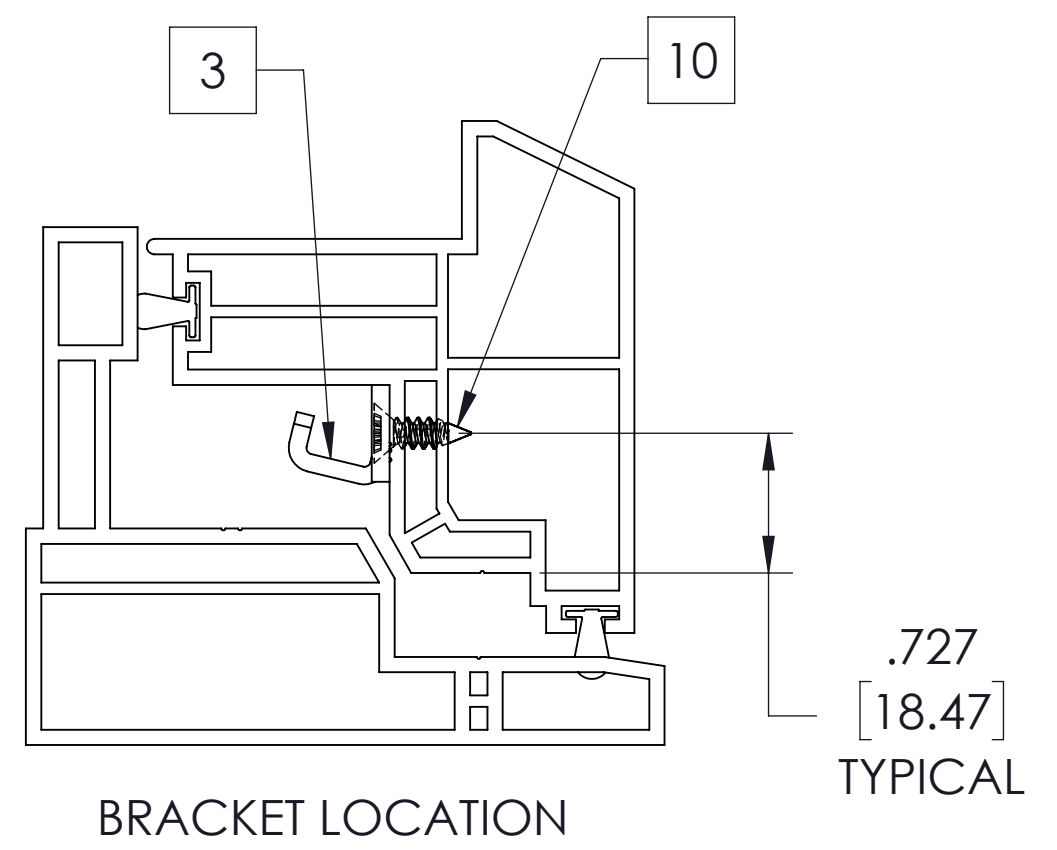


NO.	REV.	DATE	BY
1	CREATED	10/28/2021	

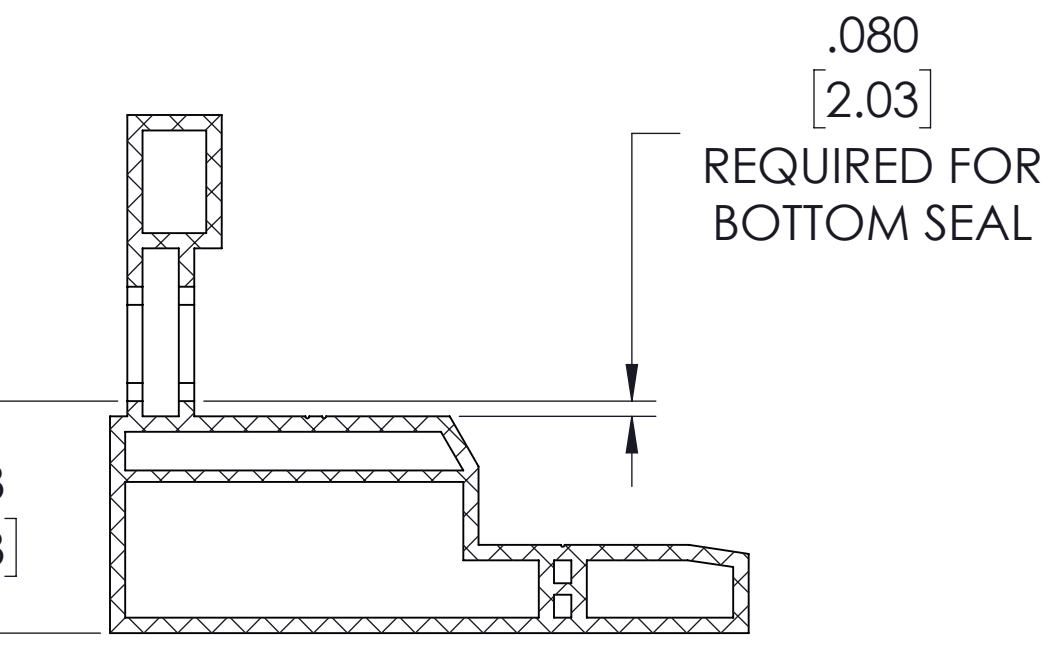
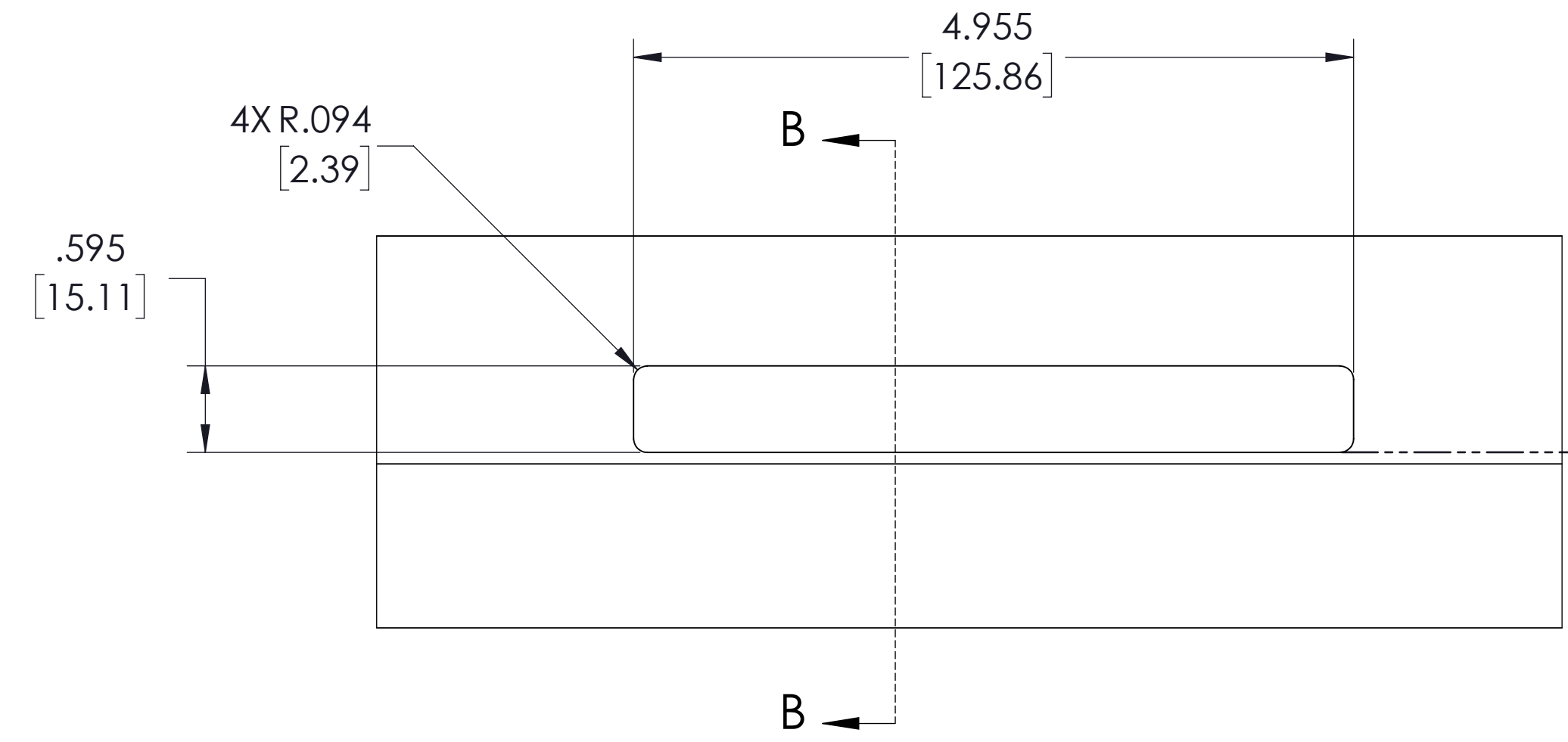


38.000  
[965.20]  
REFERENCE  
APPROXIMATE MINIMUM FRAME WIDTH IS  
17.746 WITH OPERATOR CENTERED IN FRAME  
AND SASH

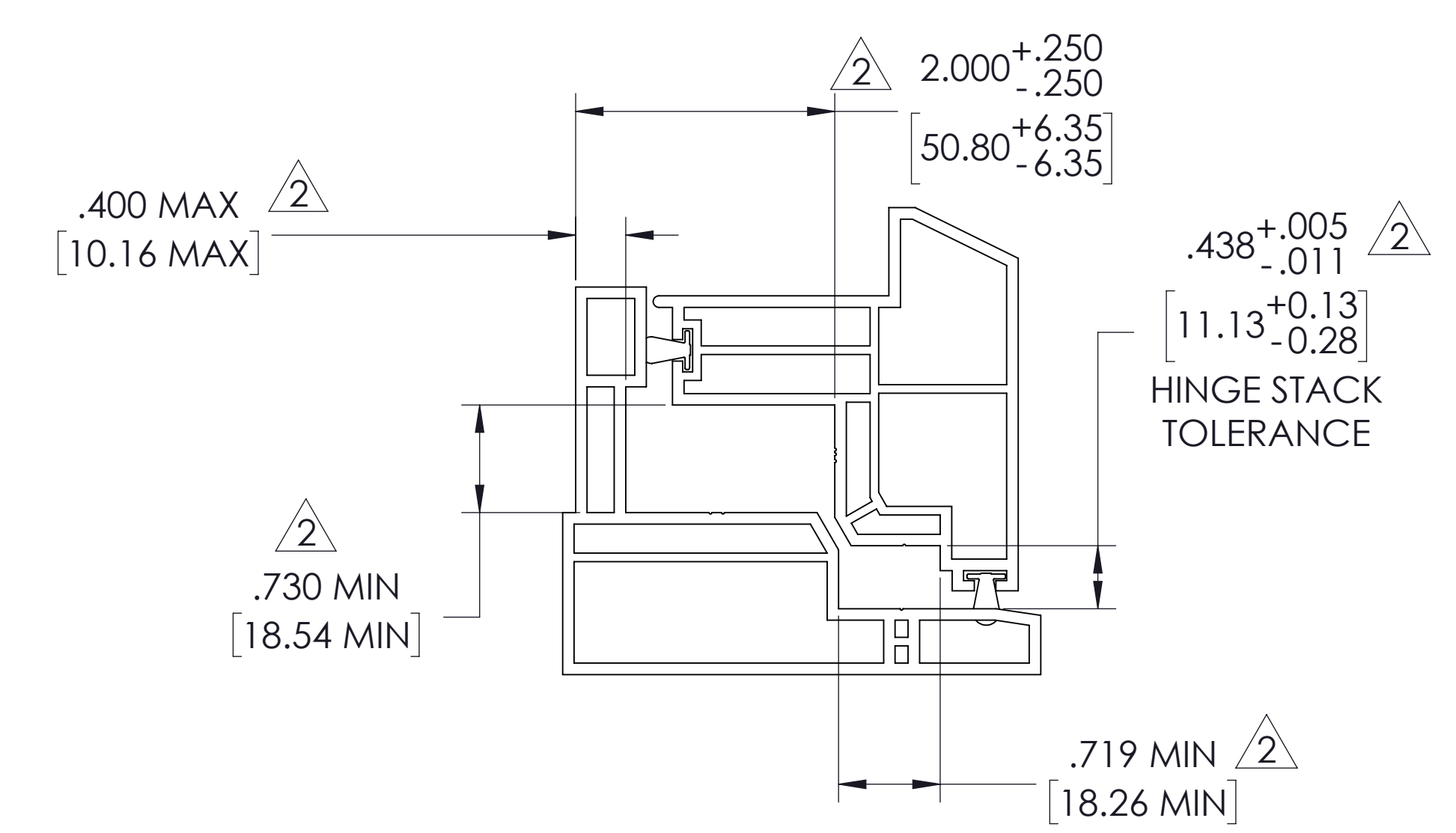
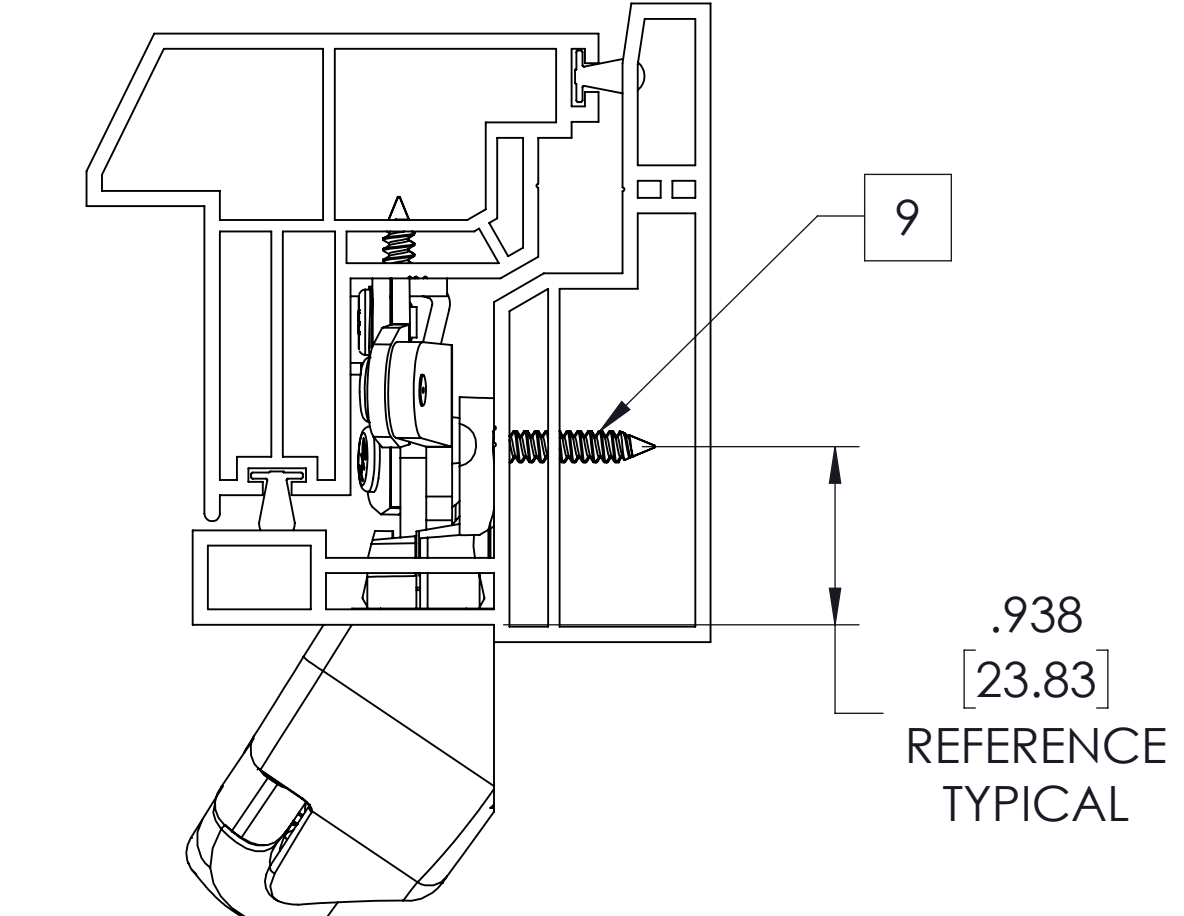
SECTION A-A  
SCALE 1 : 1



☐ OF SASH, FRAME, OPERATOR, & CUTOUT



SECTION B-B  
SCALE 1 : 1



NOTE:

⚠ WARNING! ONLY 13 SERIES AWNING HINGES ARE TO BE USED IN AWNING APPLICATIONS. FAILURE TO USE AN AWNING HINGE CAN RESULT IN SERIOUS WINDOW DAMAGE AND/OR PERSONAL INJURY. REFERENCE TECH NOTE #2 FOR COMPLETE INFORMATION. IT IS IMPORTANT THE HINGE AND SASH HEIGHT BE PROPERLY MATCHED TO ENSURE MAXIMUM OPERATOR EFFICIENCY AND AVOID SASH CHATTER.

WHEN USING THE 13.17 HINGE, HARDWARE CONFIGURATION MAY ACHIEVE:  
- MAXIMUM WINDOW SIZE OF 60"W X 42"H (RESIDENTIAL)  
- 61LB SASH PERMITTED FOR BALANCED AWNING OPERATION

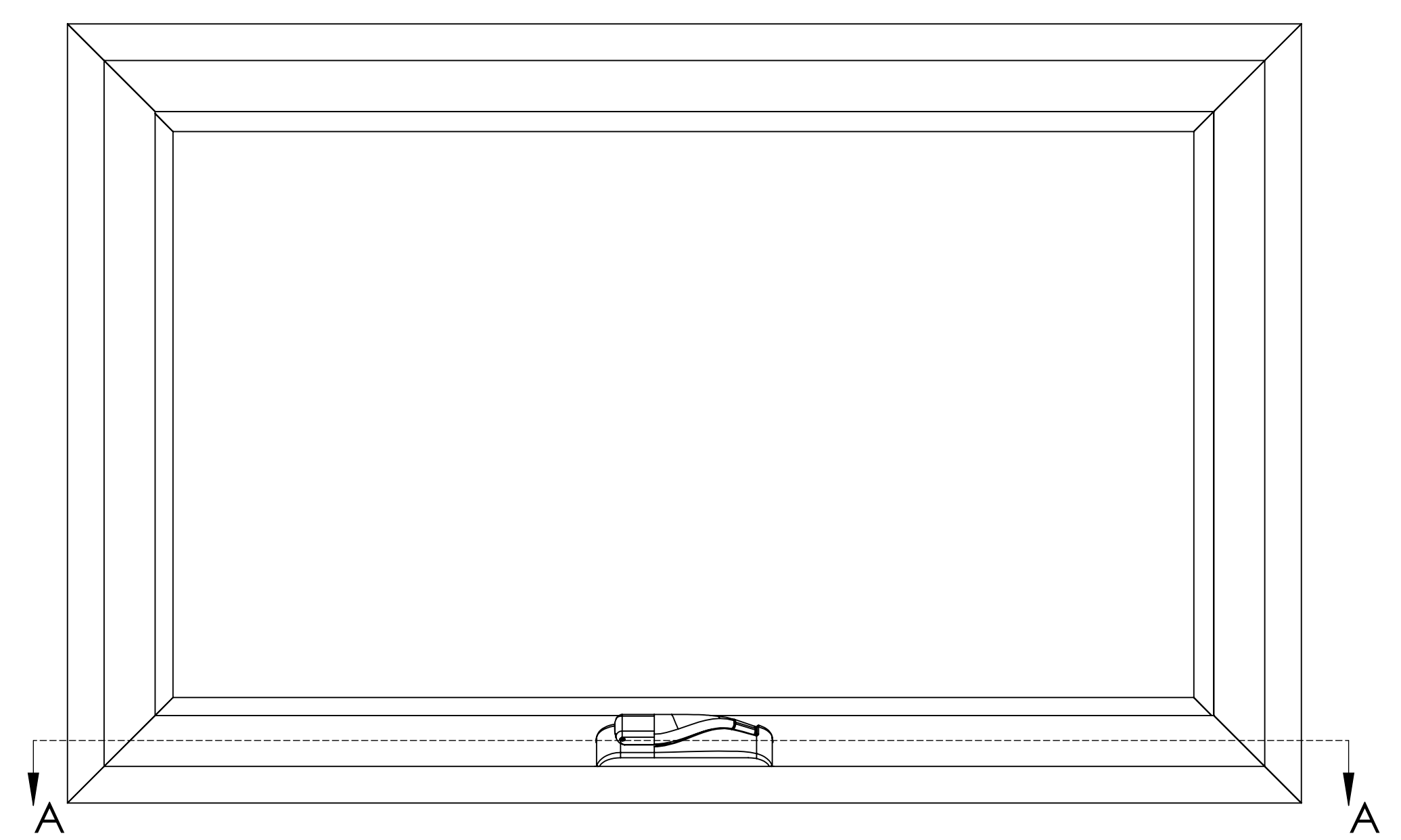
CHECK WITH EXTRUDER FOR PROFILE PERFORMANCE DATA.

- ⚠ HOLD THESE DIMENSIONS AS CLOSE TO THEIR MINIMUM AS MANUFACTURING TOLERANCES ALLOW.
- 3. MOUNTING SCREWS FOR ALL HARDWARE SHOULD PASS THRU TWO PVC WALLS OR A SINGLE WALL WITH AN INTERIOR METAL INSERT.
- 4. IT IS RECOMMENDED TO USE TWO LOCKS IN AN AWNING APPLICATION.
- ⚠ WARNING! IT IS RECOMMENDED TO INSTALL HINGE STOP 24309 IN EACH HINGE TRACK FOR SAFETY.
- ⚠ WARNING! SHIPPING BLOCK 24784 IS RECOMMENDED IN EACH WINDOW ASSEMBLY. REFERENCE TECH NOTE #13 FOR CORRECT INSTALLATION OF SHIPPING BLOCKS.
- ⚠ WARNING! ONLY TRAINED PROFESSIONALS SHOULD DISCONNECT HARDWARE TO SERVICE WINDOWS. FAILURE TO DO SO COULD CAUSE SERIOUS WINDOW DAMAGE AND/OR PERSONAL INJURY.
- 8. REFERENCE TECH NOTE #7 AND 9 FOR MOUNTING SCREW COMPATIBILITY AND CORROSION INFORMATION.
- 9. REFERENCE TECH NOTE #8 FOR PROPER CARE OF HARDWARE.
- 10. SEE TECH NOTE #14 FOR PROPER INSTALLATION OF AN OPERATOR COVER AND NESTED FOLDING HANDLE.
- 11. SEE AMESBURYTRUTH HARDWARE CATALOG FOR FURTHER INFORMATION ON APPLICATION OF ENCORE COMPONENTS.
- 12. ALL DIMENSIONS ARE AFTER WELD.

ITEM NO.	PART NO.	DESCRIPTION	QTY.
1	1913937	16" AWNING OPERATOR SST (W1497-410)	1
2	W1496-800	EXPRESSIONS HDL & CVR RH	1
3	W108154	SASH BRACKET SST (W1081-54)	1
4	SEE CHART	HGE AWN LH ASSEMBLY	1
5	SEE CHART	HGE AWN RH ASSEMBLY	1
6	24309	HINGE STOP	2
7	19070	SCREW 7X1/2 PH FU SMS S518-8	13
8	19068	SCREW 7X5/8 PH FH SMS S5410	8
9	19250	SCREW 8X1 PH FH SMS 18-8	6
10	14102	SCREW 8X.50 PH FH SMS S518-8	2

HINGE		RECOMMENDED SASH HEIGHT	RECOMMENDED MAXIMUM COUNTERBALANCE D SASH WEIGHT	HINGE LENGTH	SCREWS PER HINGE
STEEL	ST. STL.				
13.13	13.43	10.0-14.0 (254.0MM-355.6MM)	7 LBS (3.2 KG)	10.0 (254.0MM)	7
13.14	13.44	14.0-19.0 (355.6MM-482.6MM)	20 LBS (9.1 KG)	14.0 (355.6MM)	8
13.15	13.42	19.0-26.0 (462.6MM-660.4MM)	38 LBS (17.3 KG)	18.0 (457.2MM)	9
13.16	13.45	26.0-34.0 (660.4MM-863.6MM)	50 LBS (22.7 KG)	22.0 (558.8MM)	10
13.17	NA	34.0-48.0 (863.6MM-1219.2MM)	61 LBS (27.7 KG)	26.0 (660.4MM)	12

PLEASE USE CHART ABOVE FOR AWNING HINGE SECTION. RECOMMENDED SASH WEIGHTS AND HEIGHTS ARE FOR COUNTER BALANCED FEATURED ONLY. A PAIR OF HINGES HAVE A 120LB CAPACITY. THE TALLER AND HEAVIER A SASH IS OUTSIDE THE CHART RECOMMENDATIONS THE MORE SASH CHATTER WILL BE PRESENT IN THE OPERATOR ARMS.



TRUTH HARDWARE MAKES NO WARRANTY OR REPRESENTATION OF ANY KIND, EXPRESS OR IMPLIED, WITH RESPECT TO QUALITY, CONTENT, FORM, PERFORMANCE, FITNESS FOR PURPOSE, MERCHANTABILITY OR OTHERWISE OF THE APPLICATION DRAWINGS PROVIDED. THESE DRAWINGS ARE USED AT THE RECIPIENT'S OWN RISK AND TRUTH HARDWARE HAS AND SHALL HAVE NO RESPONSIBILITY FOR RECIPIENTS OR ANY THIRD PARTIES. USE OF THESE DRAWINGS OR ANY OF THE INFORMATION CONTAINED THEREIN, THE RECIPIENT AGREES TO INDEMNIFY, DEFEND, AND HOLD HARMLESS TRUTH HARDWARE AND ITS EMPLOYEES AND THEIR SUCCESSORS AND ASSIGNS FROM AND AGAINST ANY AND ALL CLAIMS, SUITS, LOSSES, DAMAGES OR COSTS INCURRED FROM USING THESE DRAWINGS OR ANY CONTENT THEREOF.

Amesbury Truth  
700 West Bridge Street  
Owatonna, MN 55060  
Telephone 507-451-5620

DATE	10/28/2021
SCALE	1:4
PROJECT	GENERIC PVC OPTIMA 16" AWNING OPERATOR
DRAWING NO.	21257X
REVISION	C
TITLE	E